

VUE Integrated Element/ Craft Management System

Overview

VUE is an end-to-end Element/Craft Management System offering integrated control over TDM and packet-based services and related infrastructures. VUE manages all products, from the latest generation platform to the widely deployed OSIRIS Multi-Service Platforms, as well as hybrid and stacked combinations that are easily managed as single, virtual network elements.

VUE provides on-demand provisioning, element and inventory management, network monitoring, security control and software upgrades from an intuitive point-and-click interface.



Scalable Carrier-Class Client/Server Architecture

VUE is built on a carrier-class, open client/server architecture that permits distributed network element monitoring and configuration from multiple workstations, easily scaling from regional to Tier-1 network topologies. Each VUE server-based application has its own console interface that can concurrently host multiple VUE clients and a variety of TL-1 aware third party packages.

Applications and their components can be distributed across many workstations and servers, or run independently on a single machine. Security is assured and simplified by unified, server-authenticated login via the server's north-bound front-end.

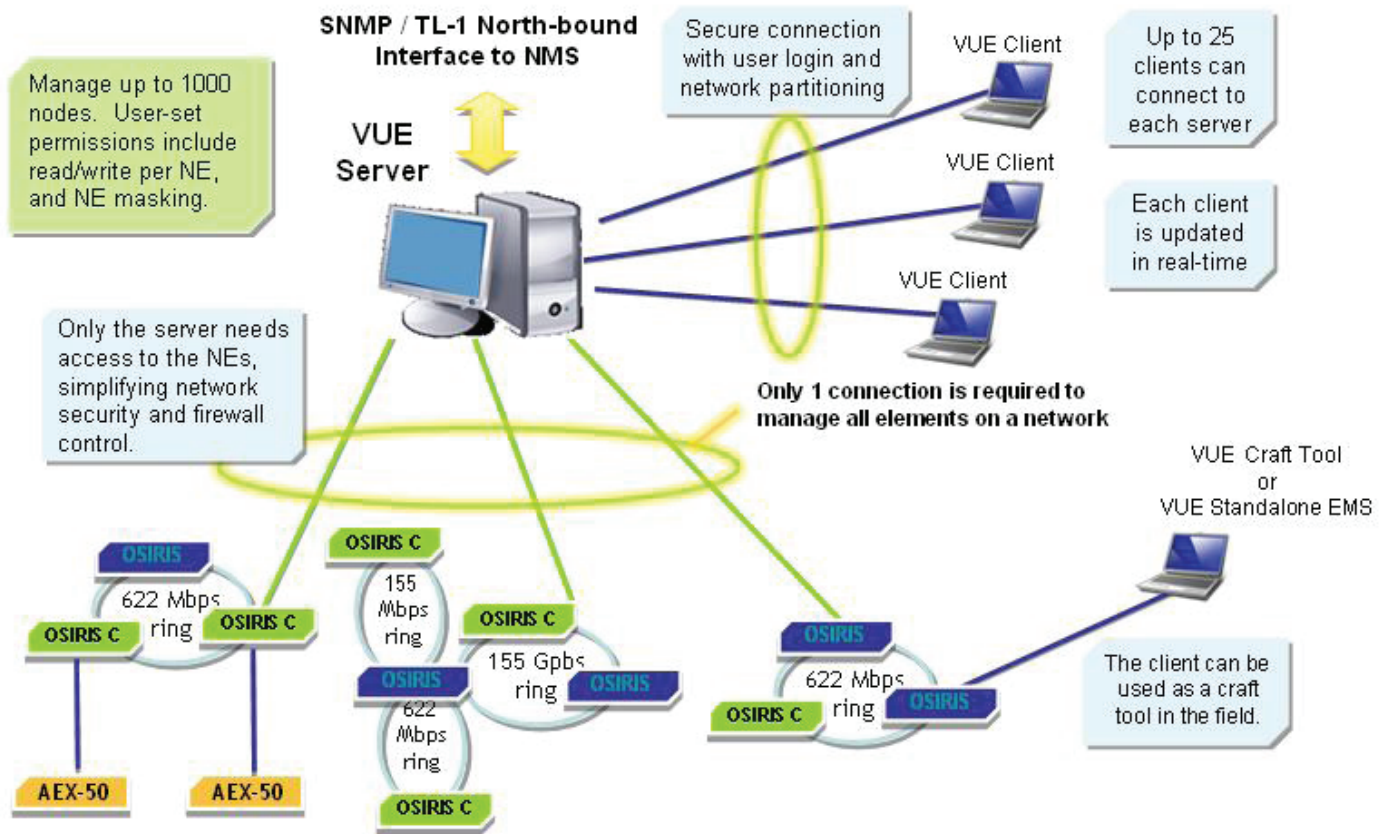
VUE applications support common communications interfaces, including serial, modem, TCP/IP and local access when the VUE client is used as a craft terminal in the field.

Key Features

- Carrier-class client/server architecture
- Runs on Windows 2000, Windows 2003 and Windows XP
- Point-and-click end-to-end connection and service provisioning, performance monitoring, inventory and security management
- Global topology views
- Supports all AEX and OSIRIS Network Elements (NE)

Key Benefits

- Integrated TDM/Packet-based service management from a single EMS
- Simple, cost effective operations from laptop or desktop
- View all network elements within single or multiple rings
- Streamlined alarm detection and tracking



Simplified Service Delivery

The efficient VUE GUI streamlines day-to-day network management with simple point-and-click operation. User-friendly tools allow elements and services to be easily provisioned from shelf-level and end-to-end connection views.

VUE's topology view presents all AEX / OSIRIS elements at a glance; multiple rings are clearly displayed in a navigable top-level window. Each ring offers drill-thru management functionality and nodes can be configured directly from a right-click menu.



Product Specifications

Architecture	Configuration Management
Distributed client / server modular architecture	End-to-end connection provisioning
Support for single or multiple client options	Auto discovery of network elements and connectivity
Up to 25 clients per server and 1000 NEs per server	Management of equipment specific and facility protection
Robust security (SSH v2) (optional)	Automated Unidirectional Path Switched Ring (UPSR) provisioning
Support for in-service upgrades	Offline configuration and pre-provisioning features
Client Interface	Security Management
Customizable GUI	Nodal or network wide security access administration for underlying managed NEs
Global topology network view	Audit trail logs for transactions through the TL-1 Mediation Server
Context sensitive drill-down actions to devices and links	Intrusion detection
Context sensitive help	
Craft tool to craft tool user messaging (Chat)	
Fault Management	Performance Management
Graphical representation of alarms and severity status	Graphical representation of performance monitoring counters
Enhanced filtering and object management capabilities	Statistics for section, line and path PDH: DS-1/DS-3/E1/E3 SONET: STSxc/STS/VT1.5 SDH: VC-3/4 , VC-12
Simple Network Management Protocol (SNMP) trap forwarding option	Compliance with Metro Ethernet Forum (MEF) Ethernet statistics parameters
E-mail and Pager Calling option	
End-to-End circuit monitoring	

System Requirements

The VUE platform consists of the following elements, sold separately:

VUE Element	CPU Requirements	Operating Systems Supported
VUE Client (Single-Session)	Pentium 3; 300MHz (minimum) Pentium 4 (recommended)	Windows® 2000 Windows® XP Windows 2003
VUE Client (Multi-Session)	Pentium 3; 300MHz (minimum) Pentium 4 (recommended)	
VUE Server	Pentium 4 (>2 GHz minimum) Pentium 4 Dual Core (>2 GHz minimum)	